



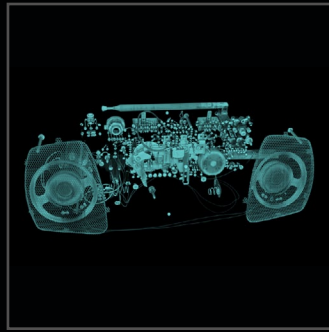
## *2D Digital X-ray and 3D Computed Tomography*



**X5000** The X5000 is a multi-axis high-resolution digital x-ray system for digital radiography and computed tomography inspection of small to large objects with a large format detector. The 5000 Series has innovative cabinet and manipulator designs for easy part loading of even the largest of objects. The system can accommodate a variety of part shapes, sizes and weights. The steel/lead/steel cabinet has a fit and finish that is unparalleled in the industry and the machine tool technology used in the motion control system ensures a long trouble free life. All systems are manufactured to meet all state and federal radiation safety regulations.



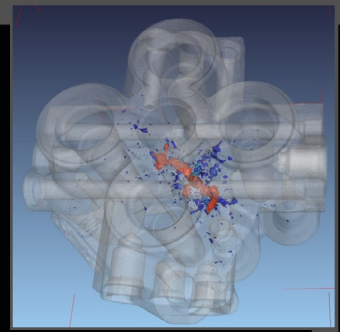
RESEARCH



ELECTRONICS



AEROSPACE COMPONENTS



CASTING

## SPECIFICATIONS

### OVERALL

- X-ray Energies from 10kV-450kV
- Geometric Magnification: Greater than 2000x
- Overall Maximum System Resolution: < 500nm

### X-VIEW SOFTWARE

- Comprehensive acquisition, processing and archival program with user-friendly interface
- High performance image processing and measurement functions
- Non-proprietary multiple image format output/input
- Automated program functions for fast analysis
- Multiple window interface for display of raw image, processed image, density data, etc.
- Optional Computed Tomography acquisition module
- Optional Computed Tomography calibration, reconstruction and visualization

### X-RAY SOURCE

- Voltage Range: 10kV-450kV
- Minimum Focal Spot Size: < 500nm
- X-ray Tube Types: Nano-focus, Micro-focus, Mini-focus, Open or Sealed, Transmission or Directional

### X-RAY DETECTOR

- Digital X-ray Detector Types: Flat Panel, Linear Diode Array, Image Intensifier

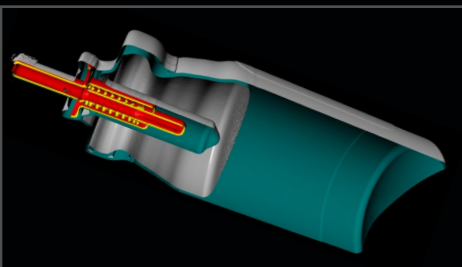
- Grade Options: Standard or Premium, 14bit or 16bit
- Detector Size: Up to 16" x 16"

### MANIPULATOR

- Maximum Sample Weight: 200lbs.
- Scan Travel (customization available): Vertical = 48", Horizontal = 24", Z axis (source to detector) = 40.5", Tilt = +20°/-15°, Rotation = 360° continuous
- Motorized detector travel for variable focal distance adjustment
- Part Manipulation Control:
  - All drives variable speed joystick controlled
  - Each axis is independently controlled
- Option: Control-X: Programmable CNC controlled automated scanning with automatic image processing and archiving capabilities
- Option: Rotational stage indexes outside of the cabinet for easy part loading/unloading

### CABINET

- External Dimensions: 77" Deep x 92" Tall x 108" Wide
- Cabinet Features: Cable access port with cover, interior lighting, powered sliding access door(s), leaded glass viewing window/internal camera monitoring system, safety light curtains
- Optional bi-parting doors for overhead part loading
- Steel/lead/steel construction
- Meets or exceeds all federal and state radiation safety regulations



MEDICAL ASSEMBLIES

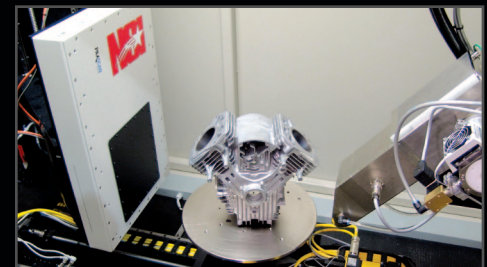
NORTH STAR IMAGING, INC.



PHONE: 1.800.635.8392 or 763.463.5650

FAX: 763.463.5651

EMAIL: SALES@4NSI.COM



INSIDE X5000

VISIT [WWW.4NSI.COM](http://WWW.4NSI.COM) OR [WWW.XVIEWCT.COM](http://WWW.XVIEWCT.COM) FOR MORE INFORMATION