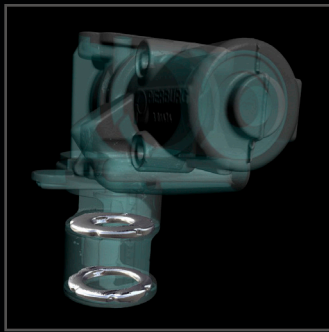




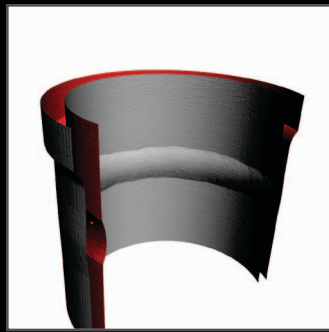
## *2D Digital X-ray and 3D Computed Tomography*



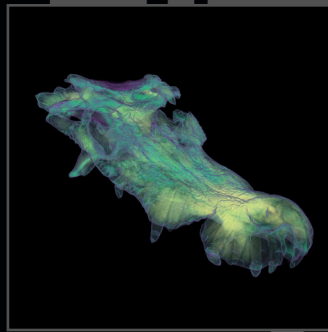
**The X500 x-ray imaging system is designed for digital radiography and computed tomography inspection of medium to large sized objects utilizing a multi-axis manipulator and optional C-arm. The spacious scan envelope of the 500 Series gives it the versatility to fulfill a wide range of radiographic applications. All systems are manufactured to meet or exceed all state and federal radiation safety regulations.**



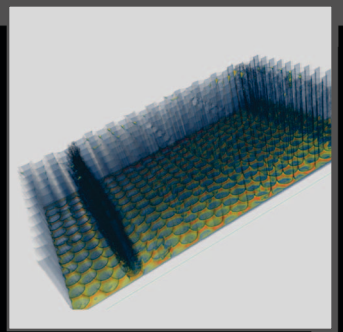
**CASTINGS**



**WELDS**



**RESEARCH**



**AEROSPACE**

## SPECIFICATIONS

### OVERALL

- X-ray Energies from 10kV-450kV
- Geometric Magnification: Up to 1200x
- Overall Maximum System Resolution: better than 1µm

### X-VIEW SOFTWARE

- Comprehensive acquisition, processing and archival program with user-friendly interface
- High performance image processing and measurement functions
- Non-proprietary multiple image format output/input
- Automated program functions for fast analysis
- Multiple window interface for display of raw image, processed image, density data, etc.
- Optional Computed Tomography acquisition module
- Optional Computed Tomography calibration, reconstruction and visualization

### X-RAY SOURCE

- Voltage Range: 10kV-450kV
- Minimum Focal Spot Size: <1µm
- X-ray Tube Types: Nano-focus, Micro-focus, Mini-focus, Open or Sealed, Transmission or Directional

### X-RAY DETECTOR

- Digital X-ray Detector Types: Flat Panel, Linear Diode Array, Image Intensifier

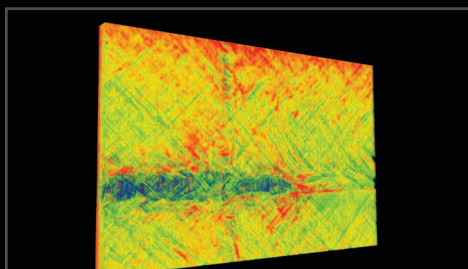
- Grade Options: Standard or Premium, 14bit or 16bit
- Detector Size: Up to 16" x 16" (40cm x 40cm)

### MANIPULATOR

- Maximum Sample Weight: 200lbs. (90kg)
- Scan Travel (customization available): Vertical = 24" (61cm), Horizontal = 24" (61cm), Z axis (source to detector) = 48" (122cm), Tilt = +20°/-10°, Rotation = 360° continuous
- Motorized detector travel for variable focal distance adjustment
- Part Manipulation Control:
  - All drives variable speed joystick controlled
  - Each axis is independently controlled
- Control-X: Programmable CNC controlled automated scanning with automatic image processing and archiving capabilities

### CABINET

- External Dimensions: 79" Wide, 108" Deep, 92" Tall (200cm Wide, 274cm Deep, 232 Tall)
- Cabinet Features: Cable access port with cover, interior lighting, powered sliding access door(s), leaded glass viewing window, safety light curtains
- Steel/lead/steel construction
- Meets or exceeds all federal and state radiation safety regulations



**COMPOSITES**

NORTH STAR IMAGING, INC.



PHONE: 1.800.635.8392 or 763.463.5650

FAX: 763.463.5651

EMAIL: SALES@4NSI.COM



**INSIDE X500**

VISIT [WWW.4NSI.COM](http://WWW.4NSI.COM) OR [WWW.XVIEWCT.COM](http://WWW.XVIEWCT.COM) FOR MORE INFORMATION